

# The complete range of MCT Brattberg products

The complete range of MCT Brattberg cable and pipe transit products is presented on the following pages in the order listed on the tab to the right. The core products needed to assemble a complete cable transit are shown in the following diagram.

MCT Brattberg's production process is ISO 9001 certified. Every product in our system is produced according to a tried and tested quality control system – which is fully documented.

- Frames
- Standard insert blocks
- U-blocks
- Spare blocks
- Components
- Accessories



## Frames

MCT Brattberg's range of transit frames, for both welding and bolting, meet the various requirements of offshore and marine applications. RGS is the most common frame type. RGSF and RGSFB withstands the powerful movement of bulkheads and decks. RGSC is a frame for use in high-stress areas.

Bulkheads onboard large vessels move slightly according to sea conditions and ambient temperature. Because we have full control over our production processes – from raw material to finishing treatment – our frames can cope with the movement caused by extreme conditions.

MCT Brattberg has frames for casting into the structure (RGB frame) and mounting in lightweight wall constructions (RGG frame).





From above, the pictures show processes that ensure the high quality of our frames: robot welding of steel frames, magnetic particle inspection and checking frame dimensions.



## Frames for maritime and offshore applications

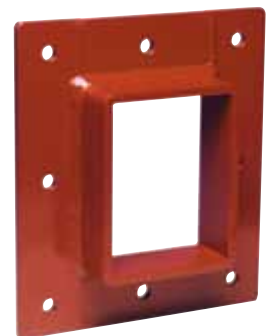
MCT Brattberg's range of transit frames, for both welding and bolting, meet the various requirements of offshore and marine applications. RGS is the most common frame type. RGSF and RGSFB frames are for less accurate holes cut in decks and bulkheads. RGSC is a frame for use in high-stress areas. The RGSK frame allows installations in positions where the transit needs to be elevated above possible contamination.



RGS



RGSF



RGSFB



RGSC



RGSK

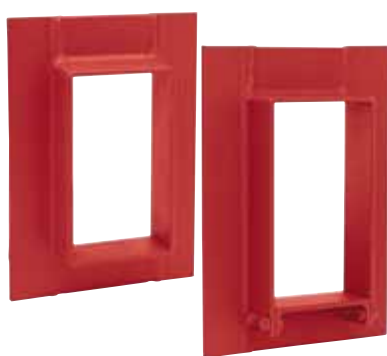


RGSR



# Frames for land-based installations

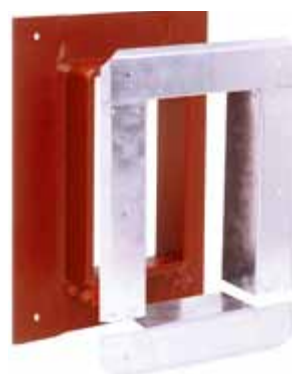
MCT Brattberg has frames for both casting into the structure (RGB frame), and mounting in lightweight wall constructions (RGG frame).



RGB/RGBO



RGG



RGGO